

24120

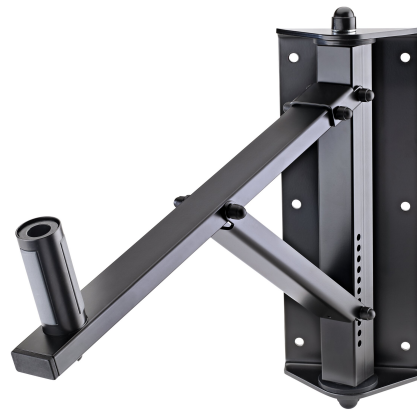
Speaker wall mount

Product variant

24120-000-55 - black

Data

Adjustment	gradual in 11 settings
Angle of inclination	0° to -22°
EAN	4016842817467
Gewicht	4.9 kg
Material	steel
Max. load capacity	50 kg
Mounting	attaches to walls
Mounting bolt	straddling bearing-anchors diameter 35 to 37 mm x 85 mm
Special features	very flexible; patented straddling bearing-anchors; guarantee effective clamping of speaker in any position; resonance-optimised construction
Swivel	180°
Type	black
Wall plate	350 x 140 mm
Wall-to-bolt clearance	441 mm



The swivelling and tiltable wall mount holds your speaker at the angle you want. The mount has 11 different tilt settings moving through 22°. The swivel is adjustable to any angle. The patented expanding mandrel for loud speakers with cabinet interiors of diameter from 35 to 37 mm is tightened with a key for a non-wobble and low-resonance speaker fit.