

## 24120

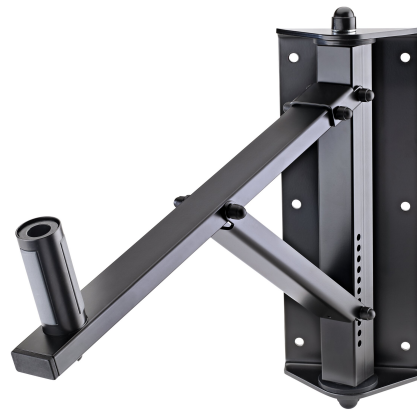
# Speaker wall mount

### Product variant

24120-000-55 - black

### Data

|                        |  |
|------------------------|--|
| Adjustment             | gradual in 11 settings   |
| Angle of inclination   | 0° to -22°   |
| EAN                    | 4016842817467  |
| Gewicht                | 4.9 kg   |
| Material               | steel  |
| Max. load capacity     | 50 kg  |
| Mounting               | attaches to walls  |
| Mounting bolt          | straddling bearing-anchors diameter 35 to 37 mm x 85 mm  |
| Special features       | very flexible;<br>patented straddling bearing-anchors;<br>guarantee effective clamping of speaker in any position;<br>resonance-optimised construction |
| Swivel                 | 180°   |
| Type                   | black  |
| Wall plate             | 350 x 140 mm   |
| Wall-to-bolt clearance | 441 mm   |



The swivelling and tiltable wall mount holds your speaker at the angle you want. The mount has 11 different tilt settings moving through 22°. The swivel is adjustable to any angle. The patented expanding mandrel for loud speakers with cabinet interiors of diameter from 35 to 37 mm is tightened with a key for a non-wobble and low-resonance speaker fit.