

18863

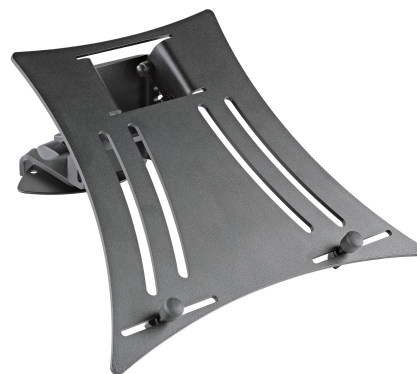
## Laptop rest for the »Spider Pro«

### Product variant

18863-000-56 - structured black

### Data

|                      |   |
|----------------------|---|
| Adjustment           | tilt gradual in 3 settings  |
| Angle of inclination | 0° to 35°   |
| Bearing plate        | 264 x 304 mm  |
| EAN                  | 4016842114849   |
| Material             | steel holder, aluminum shelf  |
| Max. load capacity   | 8 kg  |
| Product Category     | Starline  |
| Special features     | individually adjustable stop pins;<br>non-slip rubber pads are included |
| Type                 | structured black  |
| Weight               | 1.37 kg   |



Appealing laptop rest for »Spider Pro« and »Baby Spider Pro«. The laptop rest is mounted on the upper end of the keyboard stand »Spider Pro« or »Baby Spider Pro« by means of a wing nut and retaining plate. The aluminum shelf can be adjusted horizontally or inclined in three positions. Individually adjustable stop pins with rubber caps enable the use of all common laptop models, mixers, etc.